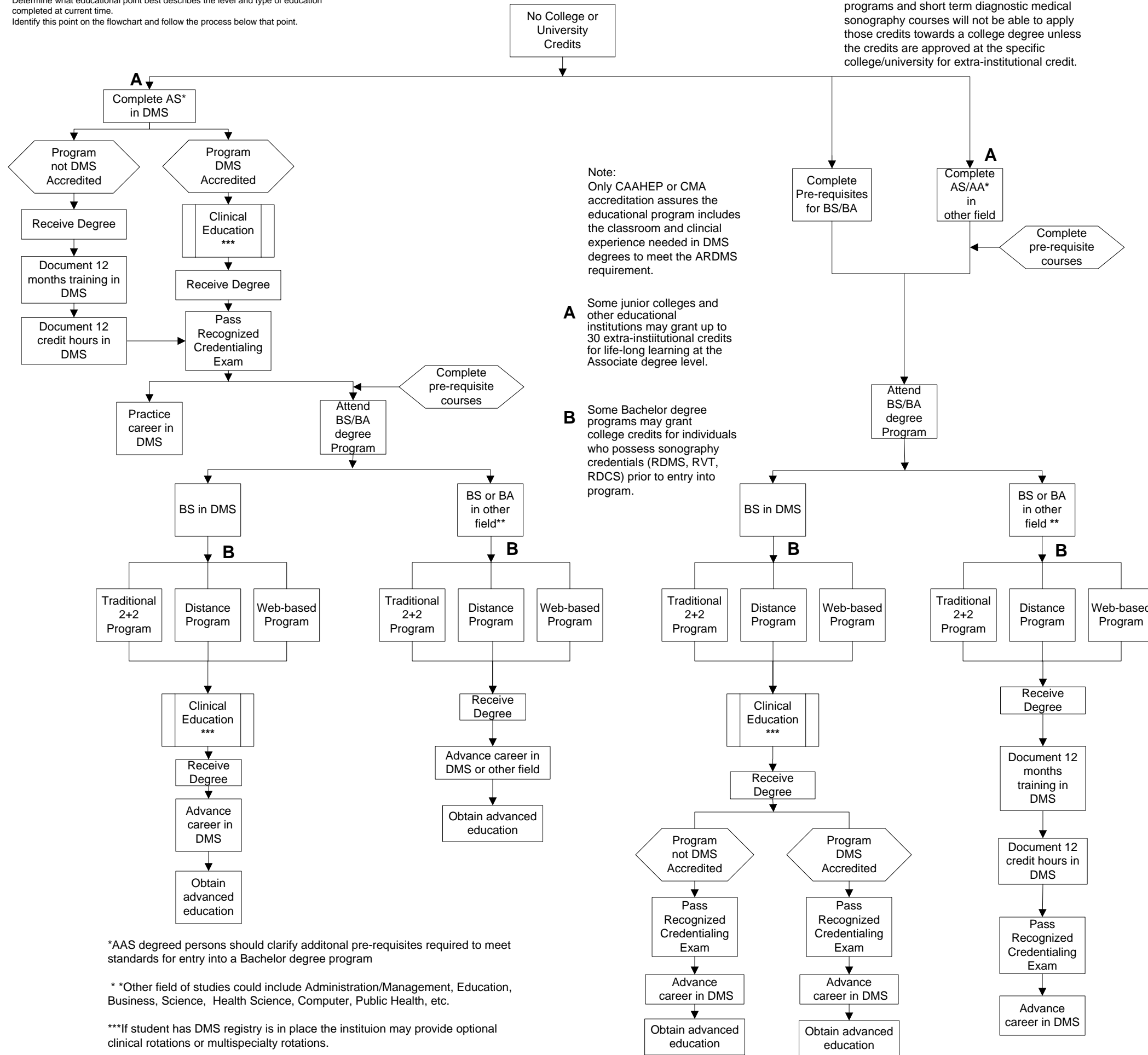


# Sonographer Higher Educational Pathways

- Beginning point on flowchart:**
- Determine what educational point best describes the level and type of education completed at current time.
  - Identify this point on the flowchart and follow the process below that point.

Sonographers who have completed certificate programs and short term diagnostic medical sonography courses will not be able to apply those credits towards a college degree unless the credits are approved at the specific college/university for extra-institutional credit.



## Glossary of terms:

- AA** An Associate of Arts academic degree conferred by a two-year college after the prescribed liberal arts course of study has been successfully completed.
- AAS** The Applied Associates of Science degree is typically a vocational degree. The credits obtained in completing an AAS degree will not transfer to many colleges and universities.
- AS** An Associate of Science academic degree conferred by a two-year college after the prescribed science related course of study has been successfully completed.
- Advanced Education** Education above and beyond a Bachelor's degree.
- ARDMS Registry** American Registry of Diagnostic Medical Sonography a nonprofit organization that administers registry examinations in each specialty area and awards credentials in the areas of diagnostic medical sonography.
- BA** A Bachelor of Arts academic degree conferred by a college or university upon those who complete the undergraduate curriculum. The course of study that typically requires four years to complete with study requirements in higher-level courses that investigate a liberal arts related topic.
- BS** A Bachelor of Science academic degree conferred by a college or university upon those who complete the undergraduate curriculum. The course of study that typically requires four years to complete with study requirements in higher-level courses that investigate a science related topic.
- CAAHEP** Commission on Accreditation of Allied Health Programs is a non-profit allied health education organization whose purpose is to accredit entry level Allied Health education programs. This accreditation is a voluntary process and indicates that the institution underwent intense scrutiny on policies and procedures. The acquisition of accreditation provides the consumer with assurance of quality of an educational institution. Most college credits obtained at accredited institutions easily transfer to other academic institutions.
- Clinical Education** Time spent in a hospital or clinical setting where the student observes and performs Sonography exam and professional behavior under the guidance of a registered sonographer. A documented amount of time must be fulfilled to receive college credit.
- CMA** The Canadian Medical Association is the national voice of physicians and national specialty groups in Canada that contribute to the development of physician advocacy and health advocacy policies at the national level.
- Distance Program** An educational program where courses are delivered with minimal or reduced time spent in classroom and supplemented by interactive TV or audio, pre-recorded TV or audio, CD Rom or computer based systems such as Internet, emails and chat rooms.
- Degree** An academic title granted by a college or university to a student who has completed a prescribed course of study.
- DMS** A Diagnostic Medical Sonographer is a person that is educated in the sonography and patient care that performs diagnostic sonographic exams in a medical setting.
- Extra-institutional credit (Life-long learning credit, prior experiential credit, prior learning credit)** Learning that is attained outside the sponsorship of legally authorized and accredited post-secondary academic institutions which could include learning acquired from work and life experiences, independent reading and study, the mass media, and participation in formal courses sponsored by association, business, government, industry, the military and unions. Granted at the discretion of the academic institution granting the credit.
- Pre-requisite courses** Courses required to be completed prior to enrolling into another course. The pre-requisite course provides knowledge necessary to complete the higher level college/university course and a generally include all general education courses.
- Life long learning** Learning that is attained outside the sponsorship of legally authorized and accredited post-secondary academic institutions which could include learning acquired from work and life experiences, independent reading and study, the mass media, and participation in formal courses sponsored by association, business, government, industry, the military and unions.
- Postsecondary education** Formal instructional programs with a curriculum designed for students who have completed the requirements for a high school diploma or equivalent. This includes programs of an academic, vocational, and continuing professional education purpose.
- Traditional 2+2 bachelor program** An educational pathway that allows a student fulfill pre-requisite undergraduate work at an accredited educational institution and transfers the credits to the institution that provides a Diagnostic Medical Sonography bachelor degree program.
- Web-based Program** An educational program where courses are delivered completely off campus using live, interactive TV or audio, prerecorded TV or audio, CD Rom or computer based systems such as Internet emails and chat rooms.